

Story Cards Instruction Sheet

1) Download & print out the instruction sheet, picture card sheet and Signalong Signs sheet.

2) **You will need:** scissors, glue and a piece of cardboard.

3) **To make:**

Cut out the cardboard to match the size of the paper.

Glue the picture card sheet to one side of the cardboard and the Signalong Signs sheet to the other side.

(Make sure you have them both the right way up and so you can see the images).

Then cut around the squares to make six story cards.

4) **Aim of the Story Cards:** the Story Cards can be used in a variety of ways.

- **One Player Game** - Create your very own story using all six of the cards - let your imagination flow!

Example: If you **LISTEN** carefully you can hear the **FOX** rummaging through the bins.....

- **Two Player Game** - Place the cards in a pile, pictures facing up and decide who is going to go first.

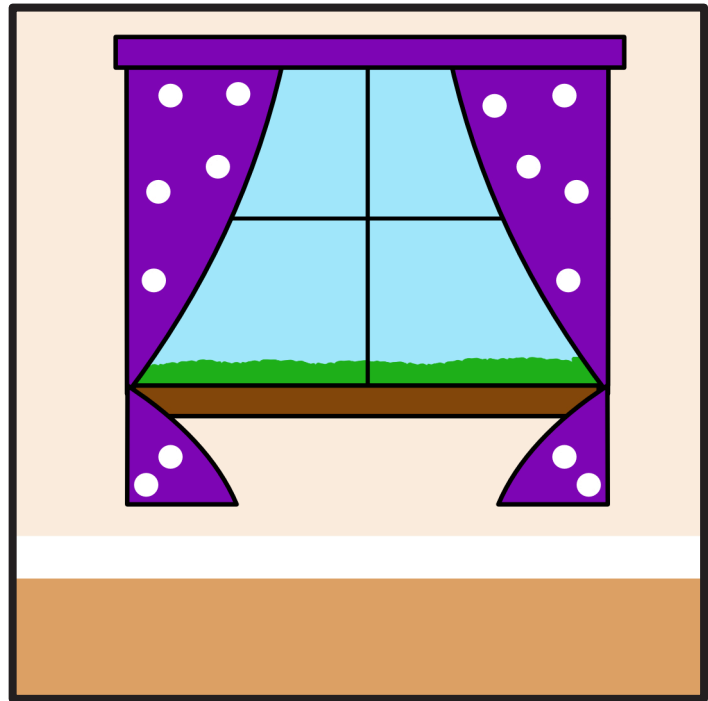
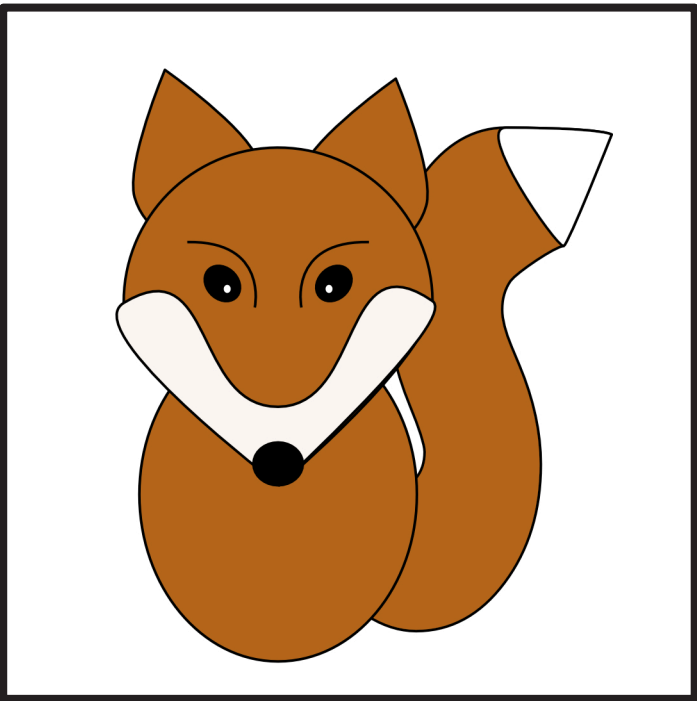
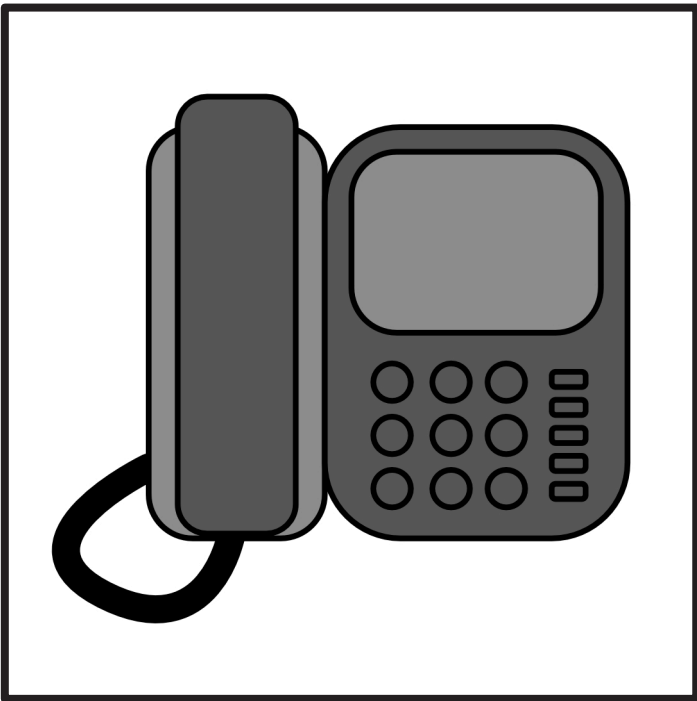
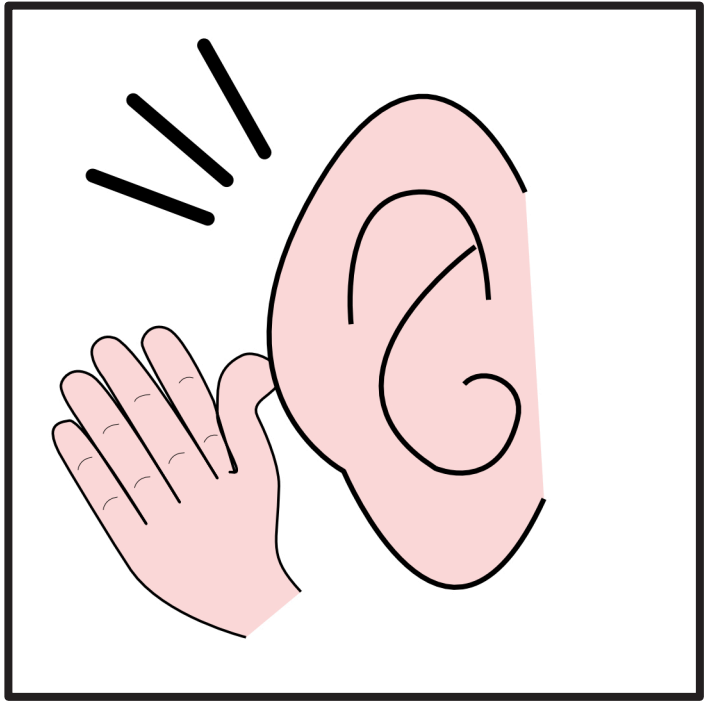
Player 1, takes a card and holds it up with the picture facing towards Player 2, and the sign facing themselves.

Player 2, must then give the 'title' of the Signalong Sign and demonstrate the action to perform the sign **correctly**.

The players then, swap over, Player 2, holds up a card with the picture facing towards Player 1, whilst Player 1, must then give the 'title' of the Signalong Sign and demonstrate the action to perform the sign **correctly**.

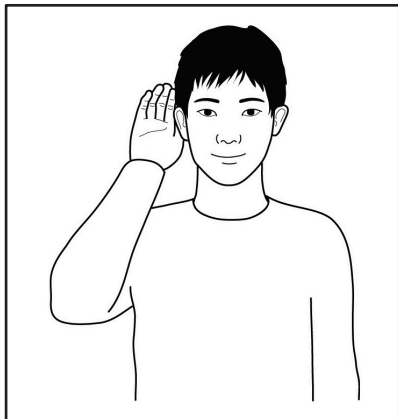
Award one point for each correct answer given.

THIS WAY UP



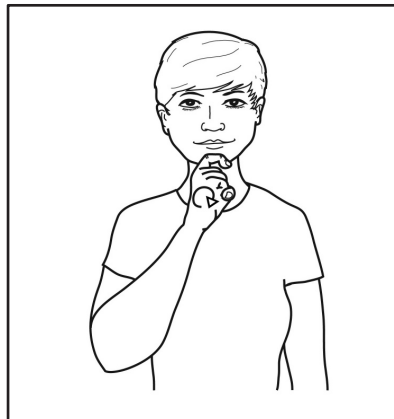
THIS WAY UP

LISTEN



Working cupped hand (palm forward, pointing up) behind ear.

CHOCOLATE



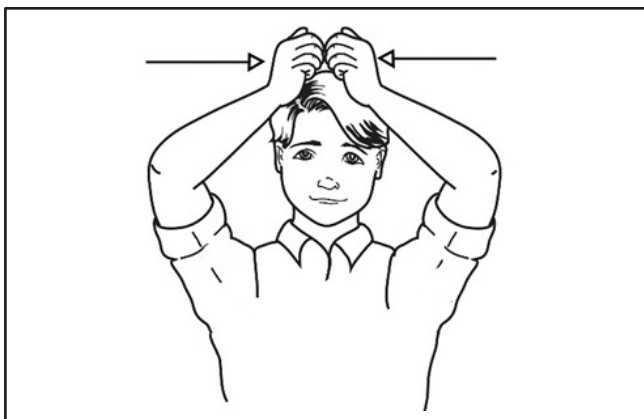
Working "R" hand (palm in, pointing up) makes inward circle on chin.

P.E.



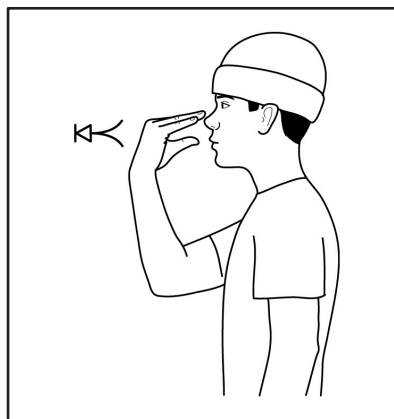
Bent hands (palms back, pointing up) tap twice against shoulders.

CURTAINS



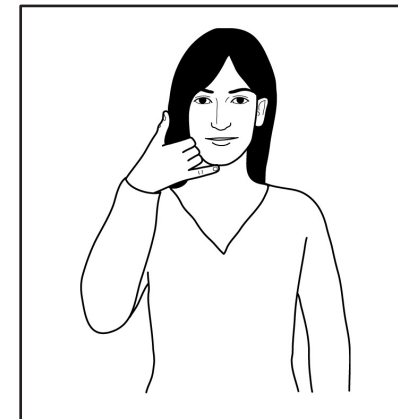
Closed hands (palms in, pointing forward) held above head; mime closing curtains.
Directional sign.

FOX



Working open bent hand (palm back/down, pointing back to face) pulls away and closes sharply to bunched hand.

TELEPHONE



Working "Y" hand (palm in/back, pointing in/up) by side of face.